

# LINEAR UP LIGHT

Data Sheet Document.

---

IP  
56

5Y  
WAR

20-30 W

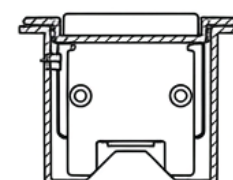
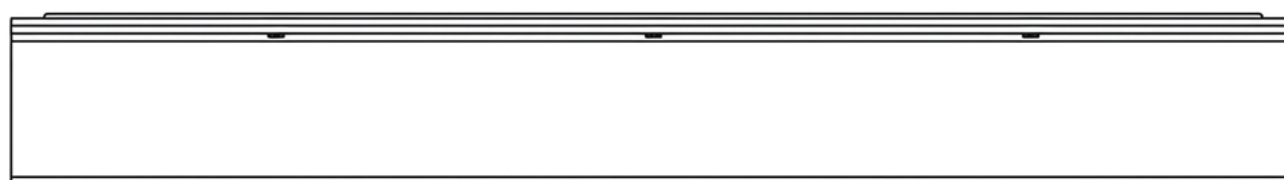
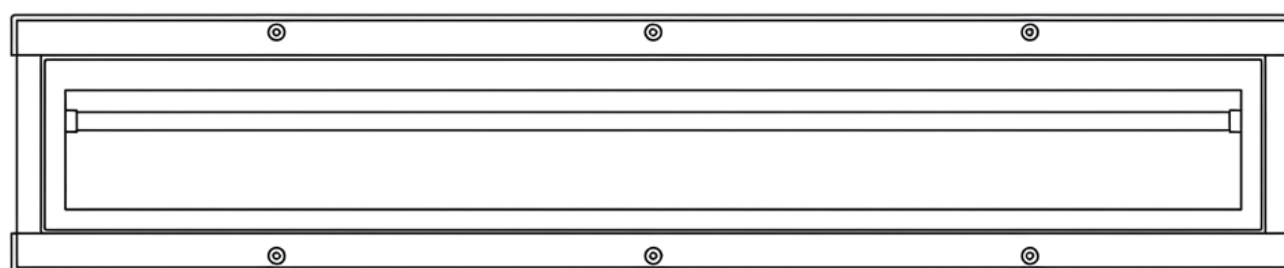
CRI  
>80

50.000  
HOURS





01	ORDER CODE	• NSL-UPL-1000-120D-20W-XXK-SMD-NS-IP65
02	DIMENSIONS (MM)	• W65 H60 D85 L1000



**03 GENERAL PRODUCT DISCRIPTION**

Ground-recessed linear uplight designed to illuminate architectural façades and columns with high visual impact. Engineered from thermally efficient aluminum and sealed to IP65 for water resistance, it offers high luminous efficacy up to 130 lm/W. Available in beam angles of 10°, 30°, and 120°, this fixture ensures precise and glare-free vertical lighting in outdoor settings.

- 04 FEATURES**
- The product is used as a pure light source using LED technology, human and environment friendly, no Pb, Hg nor UV.
  - Does not cause any flickering or electromagnetic interference.
  - High power saving fixture, no decay, and no color temperature shift.

**05 TECHNICAL DATA**

Input Voltage	220 – 240 V AC
Frequency	50 / 60Hz
Power Factor	95%
CCT	3000K, 4000K, 5000K, 6000K, RGB
CRI	80%
LED Efficiency	120-130lm/W
Power Supply	Nassli
LED Type	Osram / Cree
Materials	Aluminum, PC, & Friendly material
Color Frame	Silver
Beam Angle	10°, 30°, 120°
Life Time	50,000 Hour
Operating Temp	-20°C to +55°C
Storage Temp	-40°C to +85°C
Certifications	CE
Mounting	Ground Recessed
IP Rating	IP65
Dimmable	On Request
Emergency	On Request
Warranty	5 Years

**06 APPLICATIONS**

It can be widely used for decoration in shopping malls, palaces, trade shows, supermarkets, conference halls, hotels, schools, hospitals, meeting rooms, factories, theaters, cinemas, and corridors, etc.



**07 PHOTOMETRIC DATA**

