

LED UP LIGHT

Data Sheet Document.

IP
65

5Y
WAR

3-24 W
330LMT

CRI
>80

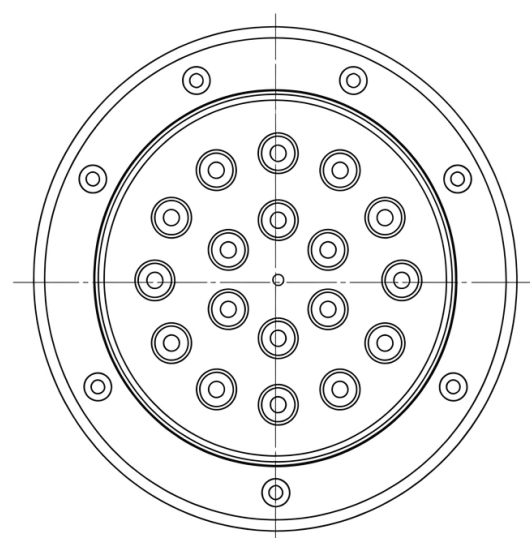
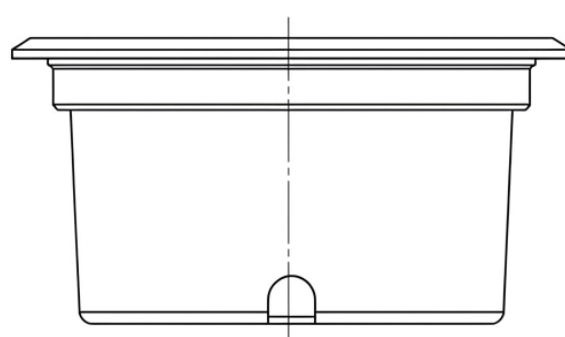
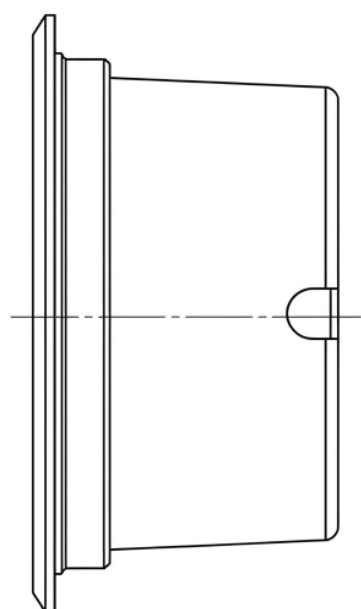
50.000
HOURS





- | | |
|----|-----------------|
| 01 | ORDER CODE |
| 02 | DIMENSIONS (MM) |

- NSL-UPL-XXD-3W-XXK-SMD-DON-IP65
- W100, H105, Ø88



03 GENERAL PROUDUCT DISCRIPTION

LED panel 60x60 integrated with distributed lenses, engineered to deliver precise, glare-free light distribution. Ideal for offices, educational institutions, and commercial centers, this fixture ensures uniform optical performance with a wide 160° beam angle and luminous efficacy of up to 130 lm/W. Constructed from aluminum and polycarbonate for enhanced durability.

- 04 FEATURES**
- The product used as pure light source, using LED technology, human and environment friendly, no PB, Hg nor UV.
 - No glare and no heat under the fixture.
 - Available with all mounting options (recessed, suspended, surface mounted).

05 TECHNICAL DATA

Input Voltage	220-240 V AC
Frequency	50/60Hz
Power Factor	>98%
cct	2700K, 3000K, 4000K, 6000K
CRI	>80%
LED Efficiency	120-130Lm/W
Power supply	Nassli
LED Type	Cree
Materials	Aluminum, PC, & Friendly material
Beam Angle	10°, 20°, 35°
Life Time	>50,000 Hour
Operating Temp	-20°C to +55°C
Storage Temp	-40°C to +85°C
Certifications	CE, SELV and ISO
Mounting	Ground Recessed
IP Rating	IP65
Dimmable	N/A
Emergency	N/A
Warranty	5 Years

06 APPLICATIONS

Ideal for Schools, Offices, Universities, Malls, Supermarkets, and special design for hotels and palaces, etc.



07 PHOTOMETRIC DATA

