

# LED STRIP LIGHT S

Data Sheet Document.

---

IP  
54

5Y  
WAR

11W  
1100 LMT

CRI  
>80

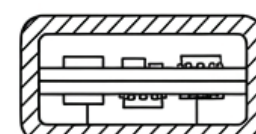
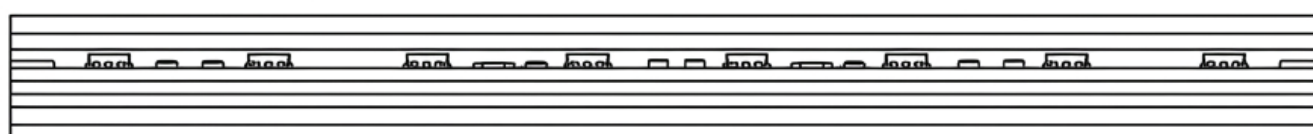
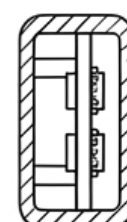
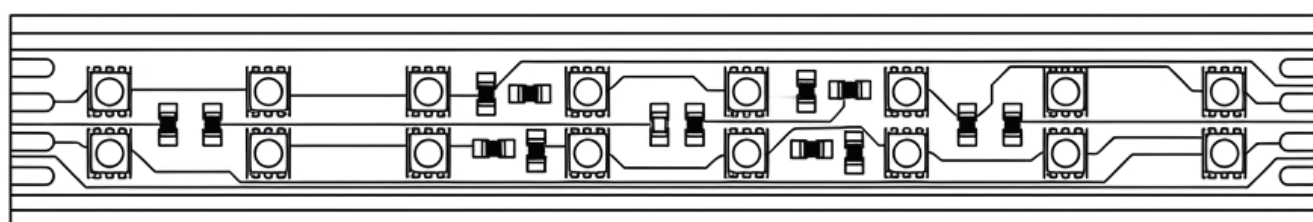
50.000  
HOURS







01	ORDER CODE	• NSL-STR-GL11W/M-220V-XXK-SMD-IP54
02	DIMENSIONS (MM)	• H8.5 W15



**03**      **GENERAL PROUDUCT DISCRIPTION**      Product Description: Indoor LED strip specially designed for decorative lighting, offering a 120° beam angle and high luminous efficacy of up to 130 lm/W. It features flexible installation and multiple CCT options, making it ideal for both commercial and residential environments.

**04**      **FEATURES**

- LED strip lighting is becoming an immensely popular modern decorating style that a lot of people are now enjoying.
- If you'd like your lights to look professional and really elevate the mood and tone of a room, read on.
- In this blog, we explore the popular trend and how you can successfully implement LED strip lights in your home.

**05**      **TECHNICAL DATA**

Input Voltage	180 - 264 V AC
Frequency	50 / 60Hz
Power Factor	90%
CCT	3000K, 4000K, 6000K
CRI	80%
LED Efficiency	120-130Lm/W
Power Supply	Nassli
LED Type	Bridgelux
Materials	PC, & Eco-Friendly material
Beam Angle	120°
Life Time	50,000 Hour
Operating Temp	-20°C to +55°C
Storage Temp	-40°C to +65°C
Certifications	CE, SELV, SASO
Mounting	Hidden
IP Rating	IP54
Dimmable:	On Request
Emergency	On Request
Warranty	5 Years

**06**      **APPLICATIONS**      It can be widely used for decoration,shopping malls, Palaces, Tradeshows, Supermarkets, ConferenceHalls, Hotels, Schools, Hospitals,Meeting room, Theater, Cinemas,Kitchens and Corridor.



**07**      **PHOTOMETRIC DATA**

